

Ophthalmic Unit IS-700



Ophthalmic Unit



IS-700

The IS-700 provides modular components for all your refraction needs in various configurations. A unique feature is the wheelchair configuration. The IS-700 offers you enhanced integration for Topcon instruments and other refraction equipment.

Ophthalmic Unit

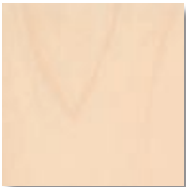
- As standard IS-700 is provided with table top elevation
- Both right and left units are available
- Various phoropter arms.- VT-670 with mechanical lock and VT-671 with automatic balancing system
- Improved new phoropter arm with linear movement - VT-72 especially for computerized phoropter
- VT-74 provides linear movement, electrically driven
- A selection of wooden finishes is available
- Superb cabling solution for data and power cables
- Standard trial lens drawer
- Dedicated glass plate for customer glasses
- Wheelchair access capability (factory option)
- Various optional accessories are available for creating your ideal setup, such as several holders for phoropter power supplies, and slit-lamp flashunit, two types of desks and an optional arm for a third instrument.
- For powerful locking the table top can be locked in position by optional electro-magnetic lock



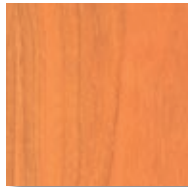
Furniture colour options

Different finishing sets; the IS-700 unit is available in two paint colours and three types of wood

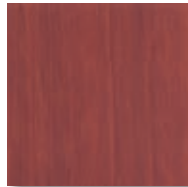
When configuring the unit, a finishing set option is available for the table top, base cover and standard trial lens drawer in standard white and light blue colours, or maple, cherry and sapelli wood finish.



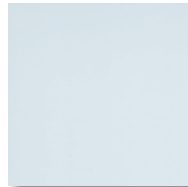
Maple wood



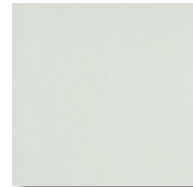
Cherry wood



Sapelli wood

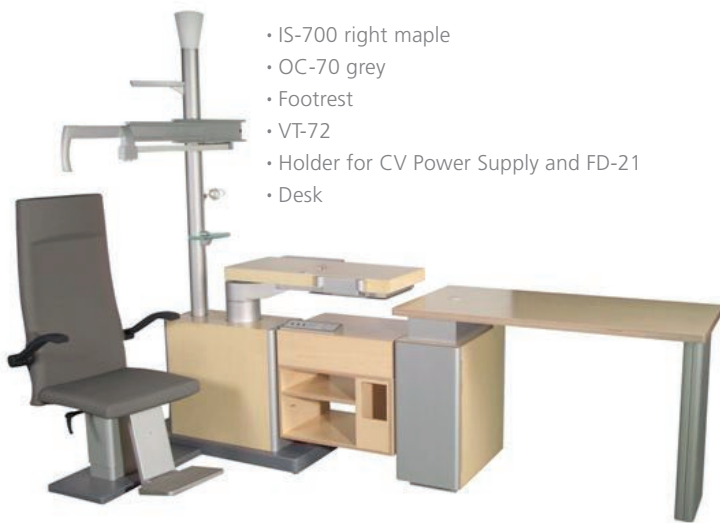


Blue painted



White painted

Furniture composition / layout examples



Chair colour options

- Two basic models;
 - OC-70 (fixed back, reclinable armrest, optional footrest)
 - OC-76 (fully reclining, reclinable armrest, including footrest, horizontal replacement)
- Movement system to allow wheelchair access as an option for the OC-70
- Low starting position of the chair enabling easy access for children and smaller patients
- Available in three colours; black, blue and grey



Black

Grey

Blue



OC-70



OC-76



OC-70 with movement system



Reclined OC-76

Optional accessories



PC desk



Extra instrument arm



Table top extender for larger instrument installation



Desk



Trial lens drawer with pc housing



Holder for CV power supply & FD-21



Holder for CV power supply

Wheel chair access IS-700

Specific features:

1. The wheel chair version is a factory option
2. Can be combined with OC-70 chair exclusively
3. Unit stability is guaranteed by optional extra weight or fixing to the floor
4. Designed according to ISO standards for wheelchair configuration:

ISO14971. This standard applies to both the unit and wheelchair.

Besides this standard, we have also taken ergonomic principles and dimensional factors into consideration, as stated in the following standard.

ISO 6440:1985 & UNE 111-913-91

Nomenclature and features concerning wheelchairs

ISO 7193:1985 & UNE 111-914-91 & UNE 111-915-91

Dimensions concerning wheelchairs

ISO 6385:1981

Ergonomic principles in the design of work systems

ISO 7176-5:1986

Wheelchairs, Part 5. Determination of overall dimensions, mass and turning space.

ISO 9241-1 / A1:2002.

Part 1. Ergonomic requirements, general introduction.

ISO 9241-5:1999.

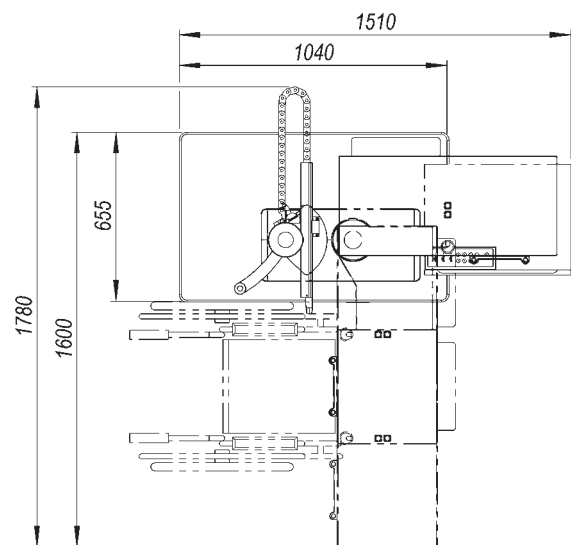
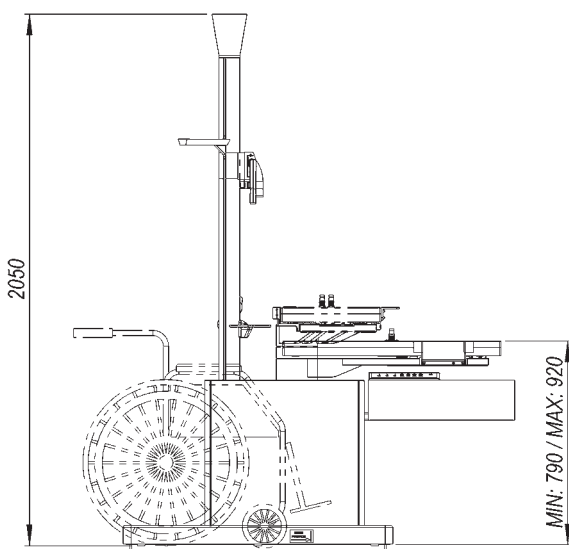
Part 5. Design at the workplace and postural requirements.

ISO 9241-1:1997.

Ergonomic principles for office workplaces with data display devices.

ISO 14971:2000

Application in risk management for medical devices.



Specifications

IS-700

Instrument table top for two instruments	
Built-in safety stops for tabletop	
Power for instruments	0-12 V / 5 A
Power for near-vision lamp	0-12 V / 50 W
Power Digital Camera DC-1	12 V DC / 1
Maximum load on phoropter arm VT 670/671	4.5 to 10 KG
Maximum load on table	40 kg
Net weight	192 kg
Power consumption	220-240V AC / 50-60 Hz.
Capacity / Consumption	1300W / V.A. max
PC desk	630 x 600 x 780 mm
Arm for extra instrument	360 x 370 x 860 mm
Desk	1210 x 600 x 780 mm
Trial lens drawer and PC	600 x 600 x 780 mm
Holder CV power supply & FD-21	565 x 430 x 340 mm
Holder CV power supply	565 x 430 x 175 mm

	OC-70	OC-76
Reclining (Full)	No	Yes
Standard base plate	Available	Possible
Wheelchair base plate	Possible	Not available
Reclinable armrest	Yes	Yes
Horizontal displacement	Optional (100 mm.)	Yes (100 mm.)
Footrest	Optional	Yes
Maximum height (on platform)	620 mm.	660 mm.
Minimum height (on platform)	450 mm.	490 mm.
Maximum load	175 kg.	175 kg.
Capacity / Consumption (max)	700 W	700 W
Power	230 V AC / 50-60 Hz.	230 V AC / 50-60 Hz.
Net weight	37 kg.	54 kg.



IMPORTANT

Subject to change in design and/or specifications without advanced notice.

In order to obtain the best results with this instrument, please be sure to review all user instructions prior to operation.

Topcon Europe Medical B.V.

Essebaan 11; 2908 LJ Capelle a/d IJssel; P.O. Box 145;
2900 AC Capelle a/d IJssel; The Netherlands
Phone: +31-(0)10-4585077; Fax: +31-(0)10-4585045
E-mail: medical@topcon.nl; www.topcon.eu

Topcon Danmark

Praestemarksvej 25; 4000 Roskilde, Danmark
Phone: +45-46-327500; Fax: +45-46-327555
E-mail: topcon@topcondanmark.dk
www.topcondanmark.dk

Topcon Scandinavia A.B.

Neongatan 2; P.O. Box 25; 43151 Mölndal, Sweden
Phone: +46-(0)31-7109200; Fax: +46-(0)31-7109249
E-mail: medical@topcon.se; www.topcon.se

Topcon España S.A.

HEAD OFFICE; Frederic Mompou, 5;
08960 Sant Just Desvern; Barcelona, Spain
Phone: +34-93-4734057; Fax: +34-93-4733932
E-mail: medica@topcon.es; www.topcon.es

Topcon Italy

Viale dell' Industria 60;
20037 PADERNO DUGNANO; (MI) ITALY
Phone: +39-02-9186671; Fax: +39-02-91081091
E-mail: topconitaly@tiscali.it; www.topcon.it

Topcon Deutschland GmbH

Giesslerallee 31; D-47877 Willich, Germany
Phone: +49-(0)2154-8850; Fax: +49-(0)2154-885177
E-mail: info@topcon.de; www.topcon.de

Topcon (Great Britain) Ltd.

Topcon House; Kennet Side; Bone Lane; Newbury
Berkshire RG14 5PX; United Kingdom
Phone: +44-(0)1635-551120; Fax: +44-(0)1635-551170
E-mail: info@topcon.co.uk; www.topcon.co.uk

Topcon Ireland

Unit 276, Blanchardstown, Corporate Park 2
Ballycoolin; Dublin 15
Phone: +353-18975900; Fax: +353-18293915
Email: medical@topcon.ie; www.topcon.ie

Topcon S.A.R.L.

HEAD OFFICE; 89, rue de Paris; 92585 Clichy, France
Phone: +33-(0)1-41069494; Fax: +33-(0)1-47390251
E-mail: topcon@topcon.fr; www.topcon.fr

Topcon Portugal

Rua da Forte, 6-6A, L-0.22; 2790-072
Carnaxide; Portugal
Phone: +351-210-994626 Fax: +351-210-938786
www.topcon.pt

Topcon Polska Sp. z o.o.

ul. Warszawska 23; 42-470 Siewierz; Poland
Phone: +48-(0)32-670-50-45; Fax: +48-(0)32-671-34-05
www.topcon-polska.pl